

MEET THE TEACHER SESSION

Year 1 Yew Class

Wednesday 14th September 2022



Woodland
Academy Trust

Ignite the spark, reveal the champion



AMBITION



COLLABORATION



COMPASSION



EXCELLENCE



INCLUSIVITY

SESSION AIMS

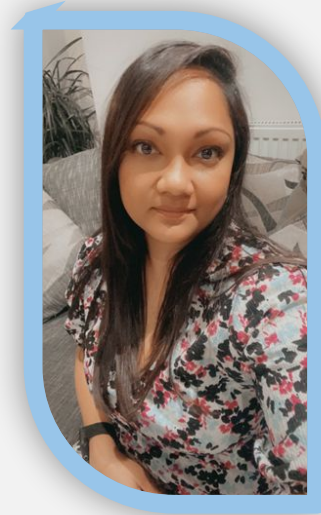
- To introduce class teacher and teaching assistant
- To talk through daily routines and weekly timetable for the coming year
- Year 1 Curriculum overview for 2022 2023
- Overview of new Relationships and Behaviour Policy
- Expectations re uniform, attendance, punctuality and home learning

WELCOME TO YEAR 1
YEW CLASS

Class Teacher – Mr Deiraniya



Teaching Assistant(s)- Mrs Eve and Miss Annan



HLTA(s)- Mrs Stupples, Mrs Marshall

DAILY ROUTINES

- School gate opens at 8:40am
- Children brought to external door (KS1) and then enter classroom
- Early morning work
- Whole school assemblies Monday, Wednesday and Friday mornings 9:00-9:20am
- Breaktime – KS1 10:15-10:30am; KS2 11:00-11:15am
- Lunchtime – 12:30-1:30pm
- Children collected from playground/hall/classroom at 3:20pm

WEEKLY TIMETABLE EXAMPLE

Year 1 Timetable

8:40 Children Start	8:40- 9:00	9:00-9:25	9:25-9:50	9:50-10:15	B R E A K	10:30-11:30	11:30-12:30	L U N C H	13:30-13:40	13:40-14:30	14:30-15:15	14:45 - 15:15	15:15-15:20
Monday	EMW Arithmetic	Assembly	Phonics	Reading		English	Maths		Shared reading	Art	RE input		Home time
Tuesday	EMW Spellings/ handwriting	PD	Phonics	Reading	English	Maths	Shared reading	Science	PE	Home time			
Wednesday	EMW Arithmetic	Assembly	Phonics	Reading	Forest School	English	Shared reading	Maths	Music	Home time			
Thursday	EMW Spellings/ handwriting	EGPS	Phonics	Reading	English	Maths	Shared reading	EGPS/ Arithmetic First 15 minutes	PE	Home time			
Friday	EMW Arithmetic	Assembly	Phonics	Reading	English	Maths	Shared reading	Humanities	Computing	Home time			

CURRICULUM OVERVIEW

Year 1 Foundation Topic Overview																								
Topic	A1 Once Upon a Time	A2 London's Burning	Sp1 No Place Like Home	Sp2 Shiver Me Timbers!	Su1 Life on Planet Earth	Su2 The World is Your Oyster (card)																		
Core text	The Jolly Postman; The Lonely Giant; Good Little Wolf, The Last Wolf	Vlad and the Great Fire of London	10 Things I can do to Help My World; I am the Seed...; The Name Jar ; Beegu	Pirates Love Underpants; How to find Gold	Here We Are; Notes for Living <u>On</u> Planet Earth; One Plastic Bag; Planet Awesome	Naughty Bus; Grandma Bird																		
Humanities	Geography	History	Geography	History	Geography	History																		
Trip/Visit/ Visitor	<ul style="list-style-type: none"> • Trips / visitors to be confirmed soon. 																							
Science	Animals including humans	Everyday materials	Changes in seasons	Everyday materials	Plants	Changes in seasons																		
Art & DT	Art – painting	DT – structures	Art – printing	DT – sliders and levers	Art – drawing	DT – wheels and axles																		
RE	1.1 Who is a Christian and What do they believe?	1.6 How and why do we celebrate special and sacred times? <i>* focus on Christmas and Chanukah</i>	1.5 What makes some places sacred?	1.5 What makes some places sacred?	1.7 What does it mean to belong to a faith community?	1.7 What does it mean to belong to a faith community?																		
PD	<table border="1"> <thead> <tr> <th>Families and friendships</th> <th>Safe relationships</th> <th>Respecting ourselves and others</th> </tr> </thead> <tbody> <tr> <td>Roles of different people Families feeling cared for</td> <td>Recognising privacy staying safe seeking permission</td> <td>How behaviour affects others being polite and respectful</td> </tr> </tbody> </table>		Families and friendships	Safe relationships	Respecting ourselves and others	Roles of different people Families feeling cared for	Recognising privacy staying safe seeking permission	How behaviour affects others being polite and respectful	<table border="1"> <thead> <tr> <th>Belonging to a community</th> <th>Media literacy and digital resilience</th> <th>Money and work</th> </tr> </thead> <tbody> <tr> <td>What rules are caring for others' needs looking after the environment</td> <td>Using the internet and digital devices. Communicate online</td> <td>Strengths and interests jobs in the community</td> </tr> </tbody> </table>		Belonging to a community	Media literacy and digital resilience	Money and work	What rules are caring for others' needs looking after the environment	Using the internet and digital devices. Communicate online	Strengths and interests jobs in the community	<table border="1"> <thead> <tr> <th>Physical health and Mental wellbeing</th> <th>Growing and changing</th> <th>Keeping safe</th> </tr> </thead> <tbody> <tr> <td>Keeping healthy food and exercise hygiene routines sun safety</td> <td>Recognising what makes them unique and special feelings managing when things go wrong</td> <td>How rules and age restrictions help us keeping safe online</td> </tr> </tbody> </table>		Physical health and Mental wellbeing	Growing and changing	Keeping safe	Keeping healthy food and exercise hygiene routines sun safety	Recognising what makes them unique and special feelings managing when things go wrong	How rules and age restrictions help us keeping safe online
Families and friendships	Safe relationships	Respecting ourselves and others																						
Roles of different people Families feeling cared for	Recognising privacy staying safe seeking permission	How behaviour affects others being polite and respectful																						
Belonging to a community	Media literacy and digital resilience	Money and work																						
What rules are caring for others' needs looking after the environment	Using the internet and digital devices. Communicate online	Strengths and interests jobs in the community																						
Physical health and Mental wellbeing	Growing and changing	Keeping safe																						
Keeping healthy food and exercise hygiene routines sun safety	Recognising what makes them unique and special feelings managing when things go wrong	How rules and age restrictions help us keeping safe online																						
Computing	iPad skills	iPad skills	iPad skills	iPad skills	iPad skills	iPad skills																		
Music Charanga	Hey <u>You!</u>	Rhythm in the way we walk and banana rap	In the groove	Round and round	Your imagination	Reflect, Rewind and Replay																		

AUTUMN TERM OVERVIEW

Topic	A1 Once Upon a Time	A2 London's Burning						
Core text	The Jolly Postman; The Lonely Giant; Good Little Wolf, The Last Wolf	Vlad and the Great Fire of London						
Humanities	Geography	History						
Trip/Visit/Visitor								
Science	Animals including humans	Everyday materials						
Art & DT	Art – painting	DT – structures						
RE	1.1 Who is a Christian and What do they believe?	1.6 How and why do we celebrate special and sacred times? <i>* focus on Christmas and Chanukah</i>						
PD	<table border="1"> <thead> <tr> <th>Families and friendships</th> <th>Safe relationships</th> <th>Respecting ourselves and others</th> </tr> </thead> <tbody> <tr> <td> <ul style="list-style-type: none"> Roles of different people Families feeling cared for </td> <td> <ul style="list-style-type: none"> Recognising privacy staying safe seeking permission </td> <td> <ul style="list-style-type: none"> How behaviour affects others being polite and respectful </td> </tr> </tbody> </table>		Families and friendships	Safe relationships	Respecting ourselves and others	<ul style="list-style-type: none"> Roles of different people Families feeling cared for 	<ul style="list-style-type: none"> Recognising privacy staying safe seeking permission 	<ul style="list-style-type: none"> How behaviour affects others being polite and respectful
Families and friendships	Safe relationships	Respecting ourselves and others						
<ul style="list-style-type: none"> Roles of different people Families feeling cared for 	<ul style="list-style-type: none"> Recognising privacy staying safe seeking permission 	<ul style="list-style-type: none"> How behaviour affects others being polite and respectful 						
Computing	iPad skills	iPad skills						
Music Charanga	Hey <u>You!</u>	Rhythm in the way we walk and banana rap						
PE	Invasion Games Skills 1	Gymnastics- Balancing & Spinning on points and patches						
	Fundamental Movement Skills 2	Target Games 2						

RELATIONSHIPS AND BEHAVIOUR AT WBP – OUR VISION

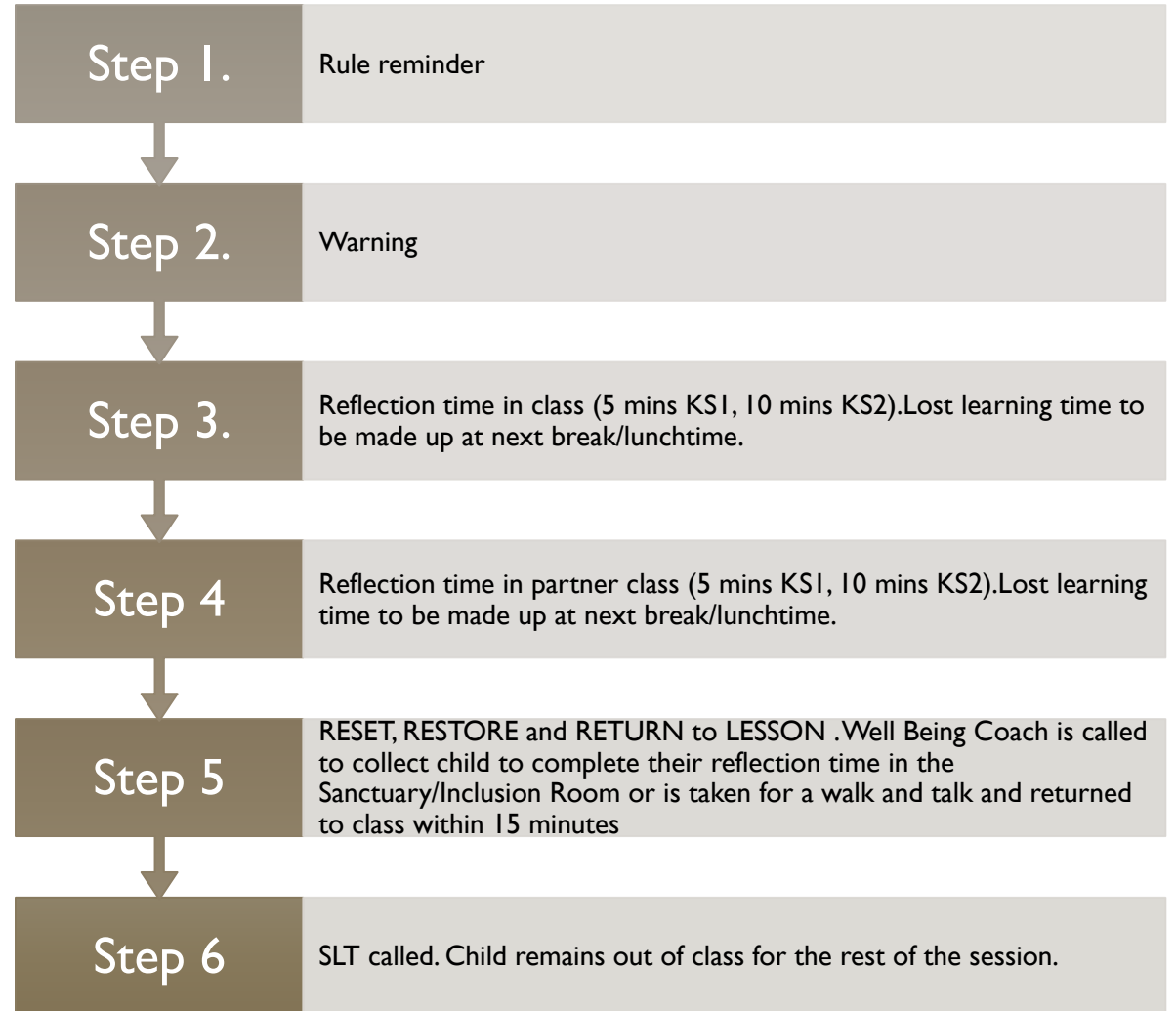
At Willow Bank Primary School, our vision is to create a learning environment where all pupils feel safe, secure and able to make the biggest possible contribution towards their own learning and that of others. We believe that by working together, we can establish a climate where all learners work collaboratively and in partnership to ensure the quality of learning is of the highest standard.

We believe that our core values : **respect, integrity, kindness, resilience, aspiration, and curiosity** are central to building positive relationships and excellent learning behaviours within our school community.

A POSITIVE BEHAVIOUR
APPROACH AT WILLOW BANK
PRIMARY SCHOOL

- Celebration Assemblies -every Friday
- Golden wristbands to celebrate exceptional effort – reason written onto wristband
- Attendance rewards
- House Points – one house point given at any one time recorded on the Dojo platform
- Positive postcards home
- Positive phone calls home
- Informal conversations with parents at the end of the day
- Photocopying learning to go home with a brief note from the teacher

OUR BEHAVIOUR STEPS



UNIFORM

- We are proud of our school and our uniform which enables our children to have a sense of belonging to our wonderful school community.

Girls

- Royal blue cardigan with the school emblem or plain royal blue cardigan
- White polo shirt with the school emblem or plain royal blue cardigan
- Grey skirt/pinafore or smart grey trousers (not fashion trousers) and grey socks.
- Blue and white school dresses/skirts or shorts may be worn in the summer with white socks
- Flat, black sensible school shoes
- Plain hairbands- no bows please

UNIFORM

Boys

- Royal blue jumper with the school emblem or plain royal blue jumper
- White polo shirt with the school emblem or plain white polo shirt
- Grey trousers and grey socks
- Grey shorts may be worn in the summer term
- Black school shoes (no boots or trainers)

PE KIT- MAY BE WORN TO
SCHOOL ON PE DAYS
TUESDAYS AND THURSDAYS

- White, round necked t-shirt with the school emblem or plain white round necked t-shirt
- Royal blue shorts
- Plimsols for indoor PE, trainers for outdoor PE
- PE bag with a drawstring top
- Royal blue tracksuits may be worn outside in cold weather
- Reception only: navy outdoor all-weather anorak and trousers

Please ensure all items of clothing –including shoes and coats- are labelled clearly with your child's name

UNIFORM

Book Bags

- All children are expected to bring a book bag or rucksack to school every day so they can keep reading books, letters and homework safe and dry

Jewellery

- One pair of stud earrings (which will be removed during PE by the child). Please note that staff are not permitted to remove earrings.

PUNCTUALITY

At Willow Bank we monitor every child's attendance and punctuality very closely to ensure the children maximise every learning opportunity.

Please ensure your child is in school on time every day. Gates open at **8:40am** and are closed at **8:50am**.

Arriving to school on time is very important as this will create good habits for the future and establish positive routines. It also ensures other children in the class are not disrupted who have already settled down to their learning.

ATTENDANCE

If your child is ill and unable to come to school, please phone the school office from 8:00am in the morning to inform us of the reason your child is absent. We will call you if we do not receive a phone call.

During the academic year **Mrs Edgar**, our **Community Liaison Officer**, will be monitoring and tracking pupils' attendance. Our aim is to work together with children and parents in order to ensure high attendance across the whole school. This will result in your child getting the most from their education and lead them to future success.

Please be aware that in accordance with our policy on absence during term time, if you take your child out of school for an unauthorised absence during term time, it is possible that a Penalty Notice will be issued to each parent for each child taken out of school, as stipulated in the Education (Penalty Notices) (England) Regulations 2007.

HOME LEARNING

- At Willow Bank Primary School we recognise that parents make an enormous contribution in supporting the education of our children. Parental encouragement is a key factor to raising attainment and fostering a love of learning.



Year 1- Autumn 1 Topic Overview –

In Autumn 1, students will begin to get an understanding of the local area, looking at very basic physical and human features of the surrounding area. Following that, the students will use maps to explore the United Kingdom. This is a unit of study that sets a basic geographic knowledge and will explore the local area, including where we live. We will then go on to explore the UK.

Big Bang! In Year 1, we will be reading a variety of fairy tales inspired or focussed on traditional tales. We will create lots of fairy tale inspired art and work and investigate them in many forms.

Our Learning Overview

Once Upon a Time

English

In Writing, we will be revisiting traditional tales, such as Goldilocks and the Three Bears; Jack and the Beanstalk. The children will be exploring alternative versions of popular stories.

Maths

In Maths, we will be consolidating our place value knowledge, continuing to develop our addition and subtraction skills.

Science

In Science, we will be learning about plants. We will learn about the features of a plant and about different types of trees.

Geography

In Geography, we will use maps to identify the four countries and capitals of the United Kingdom, as well as its surrounding seas. We will also be looking at the oceans and seas that surround us.

Art/DT

In Art our focus is painting. We will develop skills to allow us to use paint effectively and learn about primary and secondary colours.

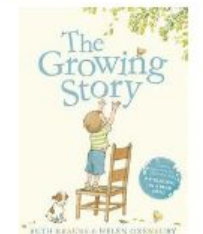
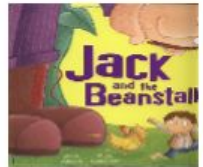
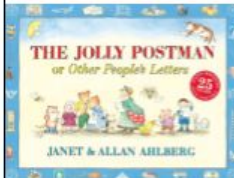
PSHE/RE

In RE, we will be learning different religious stories with a focus on Christianity and sharing stories to explain how Christians think of God.

Music

In Music, we will be taught to sing and play music with increasing confidence and control. We will develop an understanding of musical composition, organising and manipulating ideas within musical structures and reproducing sounds from aural memory.

Key Texts



DAILY HOME LEARNING ACTIVITIES

Daily reading with your child or encouraging an older child to read independently. It is important that children read books at their level to develop fluency and also enjoy books read by an adult for pleasure.

Times tables are essential for children to progress in their maths learning. A statutory test in Year Four has also now been introduced and it is expected that all children will know their times tables up to 12×12 . Each child in the school has a log in for **Times Tables Rockstars** to practise at home or you can play your own times tables games, ensuring that children can say them out of order and quickly.

READING AT WILLOW BANK

- At Willow Bank, children have access to a wide range of books in their **reading corner** and are encouraged to take a new book home to read every week (unless they haven't finished/want to keep their previous book).
- Children should be **reading at home** every day for fifteen minutes. Please do write a comment in your child's home/school book or encourage them to do so each time you read with them
- Every class has **daily reading sessions** – early reading in EYFS and KS1 and whole class reading in KS2
- Every class has a **daily story time** for 15 minutes during which the class teacher or TA will read aloud from the class book
- This year we have introduced **Reading Passports** to encourage reading for pleasure. Every minute your child reads equates to one mile on their passport. Please initial your child's passport every time they read at home.
- Children that complete their Bronze, Silver, Gold, Platinum and Diamond passports will become a Willow Bank **Reading Ambassador** and will help to lead initiatives to encourage every child to be a life long reader

WBP READING PASSPORTS

Reading Genres:



Poetry	Ghost Story	Newspaper
Adventure Story	Instructions	Playscript
Autobiography	Legend	Traditional Tale
Diary	Letter	Science Fiction



Bronze Reading Passport













Name: _____

Class: _____

Date Issued: _____

WBP READING PASSPORTS

									 50 Miles
									 100 Miles
									 150 Miles
									 200 Miles
									 250 Miles

										 300 Miles
										 350 Miles
										 400 Miles
										 450 Miles
										 500 Miles

YEAR GROUP
EXPECTATIONS FOR
TIMES TABLES:

Y1: count in 2, 5, 10 (all doubles to 10 and halves)

Y2: 2, 5, 10, 3 (rapid recall in any order e.g. 2×5 , 5×10 , 4×3)

Y3: 2, 5, 10, 3, 4, 8

Y4: All up to 12×12

Y5: All up to 12×12

Y6: All up to 12×12

Daily reading and practicing times tables will help your child in their learning immensely and increase their confidence in school.

HOME LEARNING OVERVIEW

- In addition to this, pupils will receive a **weekly maths or English task**. This will reflect the learning that has taken place in class. Below is what weekly homework will look like across the different year groups.



Home Thinking and Learning

Year: 2 Term: Autumn 1 Topic: Maybe it's because I'm a Londoner

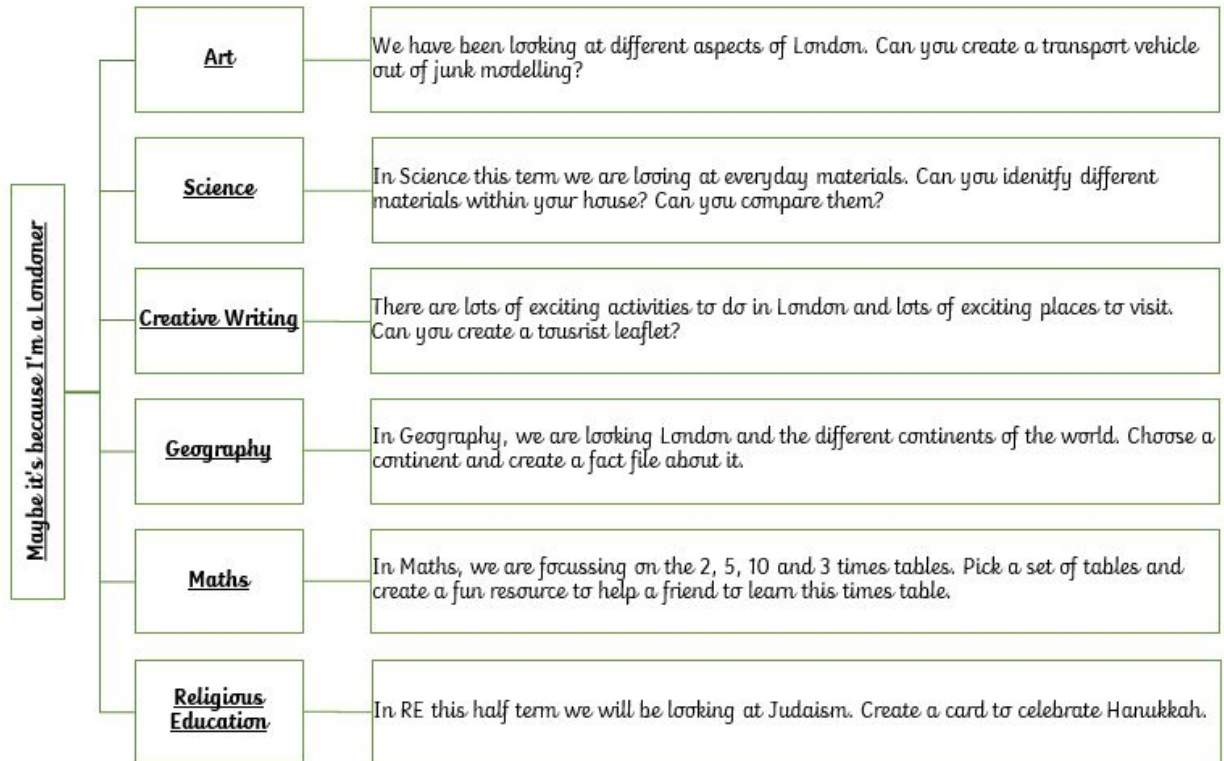
In Autumn 1, students will begin to get an understanding of what is beyond our local area. As a geography-based topic, they will be looking at the countries of the UK, continents and the seas. Children will also study physical and human features of London, setting a foundation for subsequent historical and geographical topics in year 2 and in later school years.

Please select two tasks from below which are due any time before Friday 21st October 2022.

Please ensure that you:

- **read daily** and complete a book review on a reading leaf once you have finished your book.
- practise spellings.
- practise your **multiplication skills** using Times Tables Rock Stars.

Home Thinking and Learning



COMMUNICATION

- All children will be given a reading journal. This can also be used for messages to be communicated between home and school. Please write a brief comment in it each evening when you read with your child.
- I will be in the door to the classroom at the end of every day if you need to give me any quick messages regarding your child. If you need more time to discuss a query or issue, please do make an appointment to see me by calling the school office on **0208 320 1900**.
- In addition, we will send home half termly curriculum newsletters, a weekly parent newsletter and there is lots of additional useful information on our new school website [Contact Us - Willow Bank Primary School](#)

PHONIC SCREENING CHECK

- The **Year 1 phonics** screening **check** is not a formal **test**, but a way for teachers to ensure that children are making sufficient progress with their **phonics** skills to read words and that they are on track to become fluent readers who can enjoy reading for pleasure and for learning.
- The check takes place in the summer term.

Please do come and
speak to me if you
have any further
questions.

THANK YOU FOR
LISTENING